



Proposal by myApps Solutions Pvt Ltd.,



Scope of the Proposal



Electro Plating Tubs Monitoring Solution

- Monitoring Electro Tubs Status – Idle or Running
- Overall Tub Efficiency Monitoring

Proposal Contents :

- Technical Proposal
- Project Delivery process steps
- Solution Architect Diagram
- Monitoring Application Highlights
- Tentative Master Feature list
- Product screenshots
- Commercial Proposal with Timelines

Technical Proposal – Solution Layout

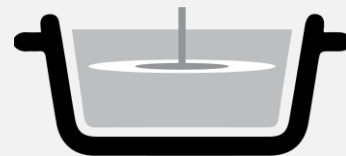


- **Proposed solution is in four parts**
 - Embedded hardware
 - Embedded software
 - Server application for data collection
 - Server application for data presentation

We will be monitoring the current value at each input of the tub. Based on the current value as below we will be displaying the respective value.

Below 0.02 Amp – tub is Idle.

Above 0.02 Amp – tub is in operation or running.

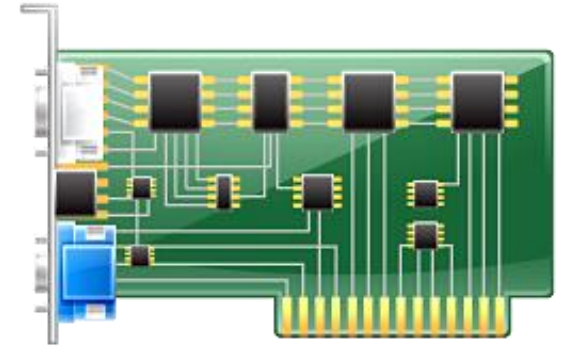


Technical Proposal – cont..



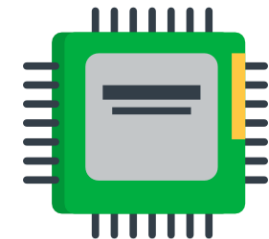
- **Embedded hardware**

- Following are the key components per 1 set:
- DC 'Current' transformer along and other components – 4 units (Can be extended up to 8 units per set, depending on the actual installation)
- Sensor control unit - 1 unit
- 'Wi-Fi' Controller – 1 unit
- Enclosure box with external connectors
- Power supply (230V AC to 12 V DC)
- Cables and other connectors



- **Embedded Software**

- Sensor control unit software for collection of all the data from each sensor and pushing the data to the Wi-Fi modem.
- Wi-Fi communication modem for transfer of data to the server.



Technical Proposal – cont..



- **Server application for data collection**

- Socket/HTTP server to receive data being sent from the various control units and store the data into database.
- Maintains the live status of each unit at the server for instant access of each unit details.
- Each tub can be labelled as required with a 10-digit ID and Name



- **Server application for data presentation**

- Front end application for user access and control.
- Front end for monitoring all tubs.
- Can dynamically add tubs.
- Can group tubs.
- Can display all tub status.
- Can display tubs by group.
- Can display tubs by status (Under use/Idle)



Project Delivery process steps



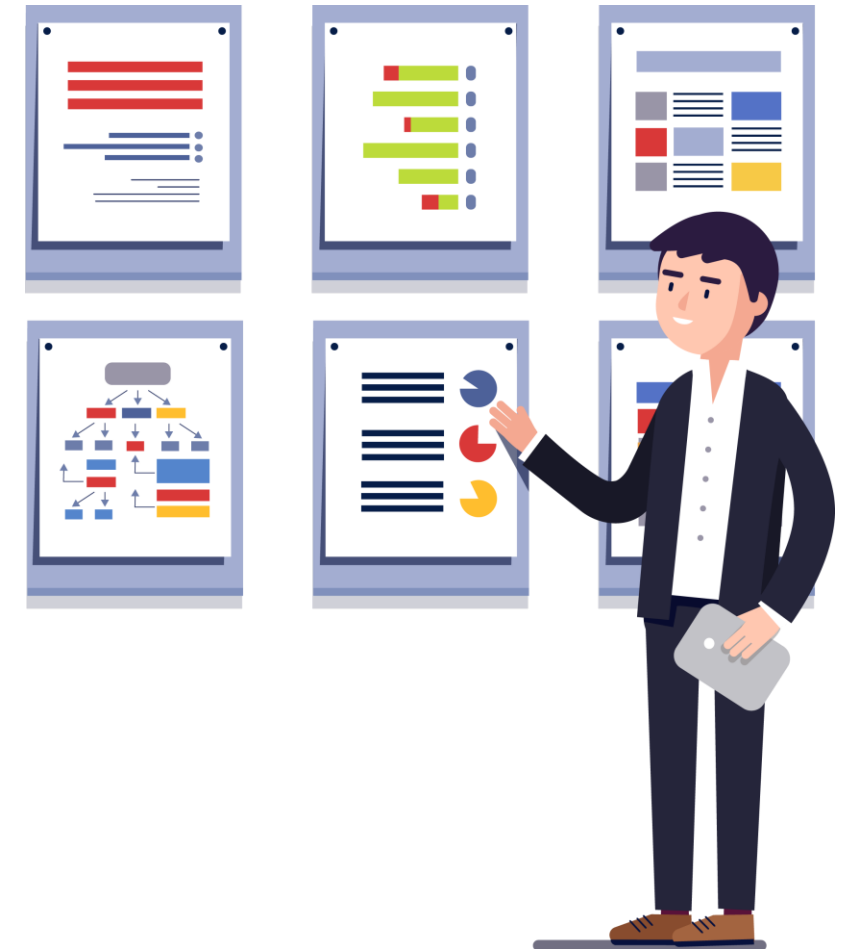
- **Step 1 - Initiation phase**
 - Contractual Agreement (between myApps & Wendt India)
- **Step 2 - Conception & the scope of requirements to finalize considering**
 - Who your stakeholders are
 - What work must be accomplished & if any pathways to impact
 - What deliverables must be generated and reviewed
 - Who must be involved
 - How to control and approve each phase
- **Step 3 - Initial Research Phase**
 - Activities to be defined to be executed in phase1
 - Agree between stakeholders
 - Periodical evaluation of the activities executed
- **Step 4 - Final Research phase**
 - Stakeholders to have access to the work & share the results effectively
 - To make sure we reflect the needs of stakeholders
 - Periodical check on deviations if any
 - Capturing the impact (positive & negative)



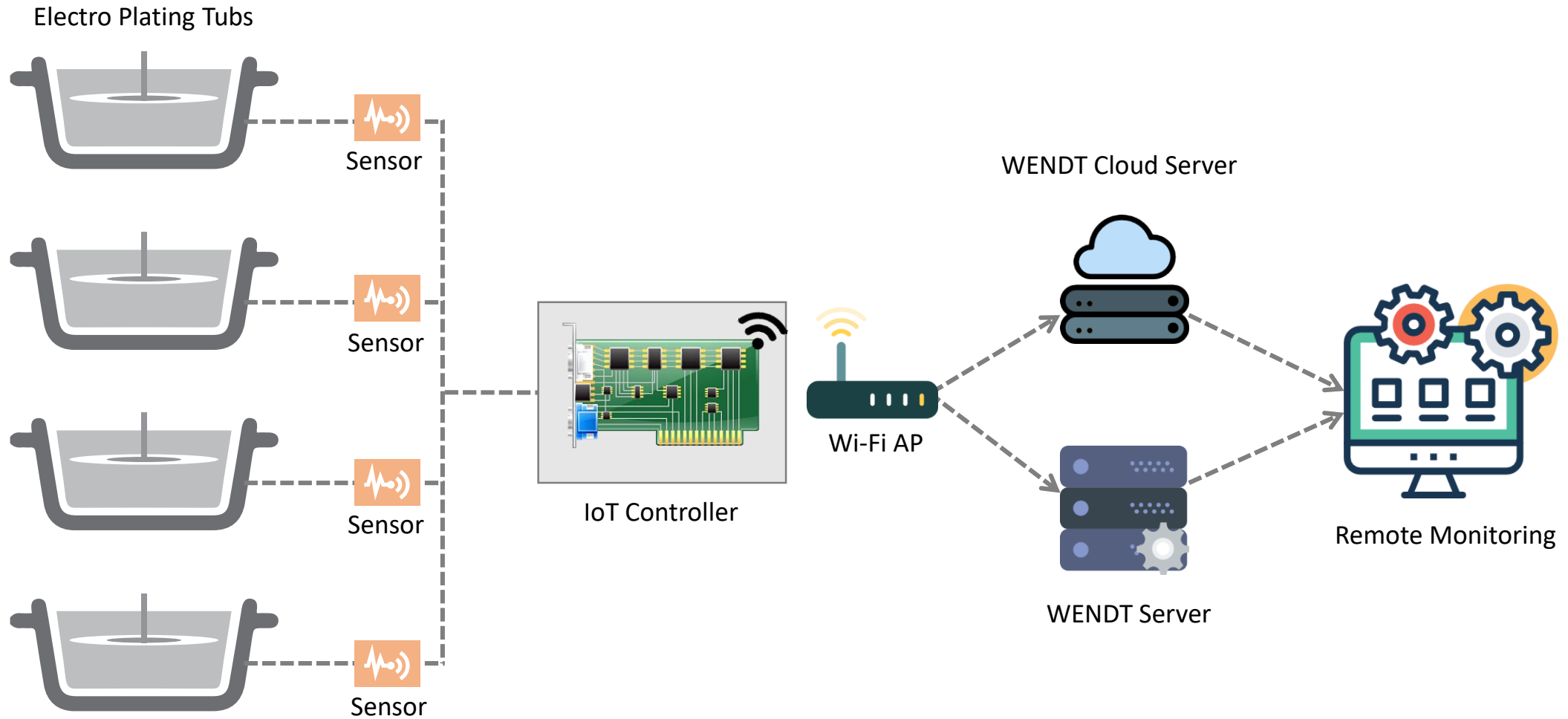
Project Delivery process steps – Contd.,



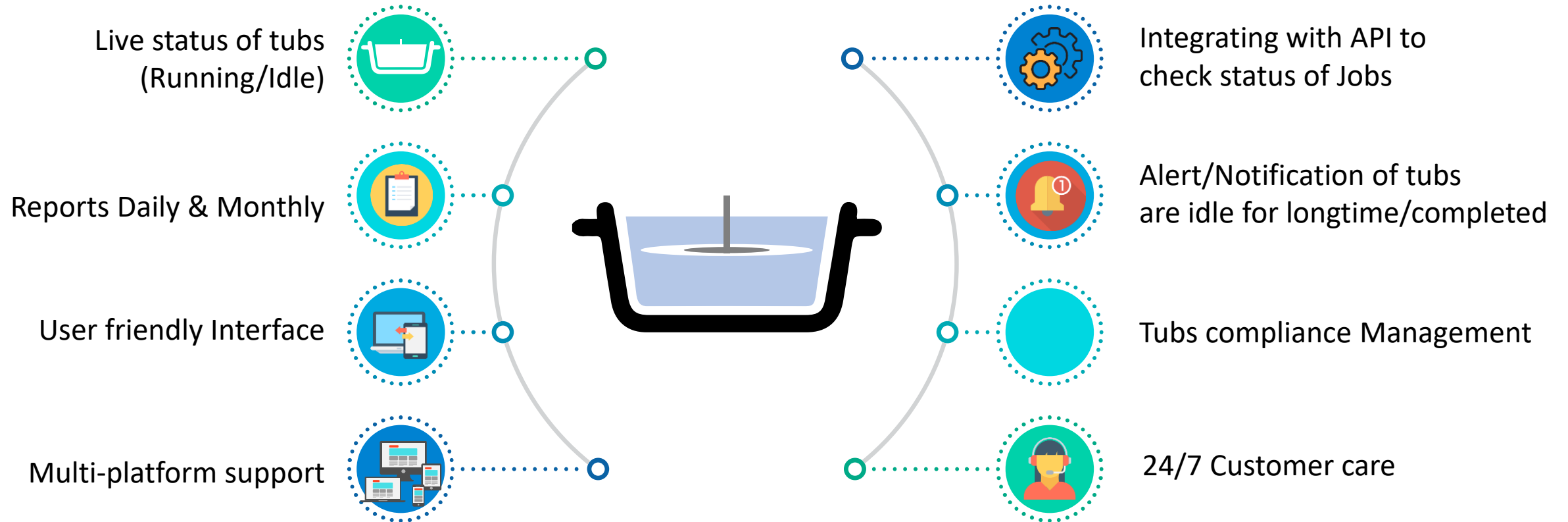
- Step 5 - Post Project phase
 - Maintaining relationship with the stakeholders
 - How to maximize the positive impact
 - How to minimize the negative impact
 - Capture the learnings
- Step 6 - Maintenance phase
 - Sustenance
 - 24x7 Customer care support
 - Review and redressal mechanism



Solution Architect Diagram



Monitoring Application Highlights





Tentative Master Feature list

List of features for Operator(s)

- Monitor live status of tubs Running/Idle.
- Alert: Notification with sound when tubs complete the operation.
- Alert: Notification when tubs are Idle for long time.
- Compliance Management (can raise machine breakdown & maintenance issues).
- Job Status reports.

List of features for Maintenance Team

- Alert: Notification with sound when any operator rise a issue.
- Checklist after resolving the issue.
- Issue reports.





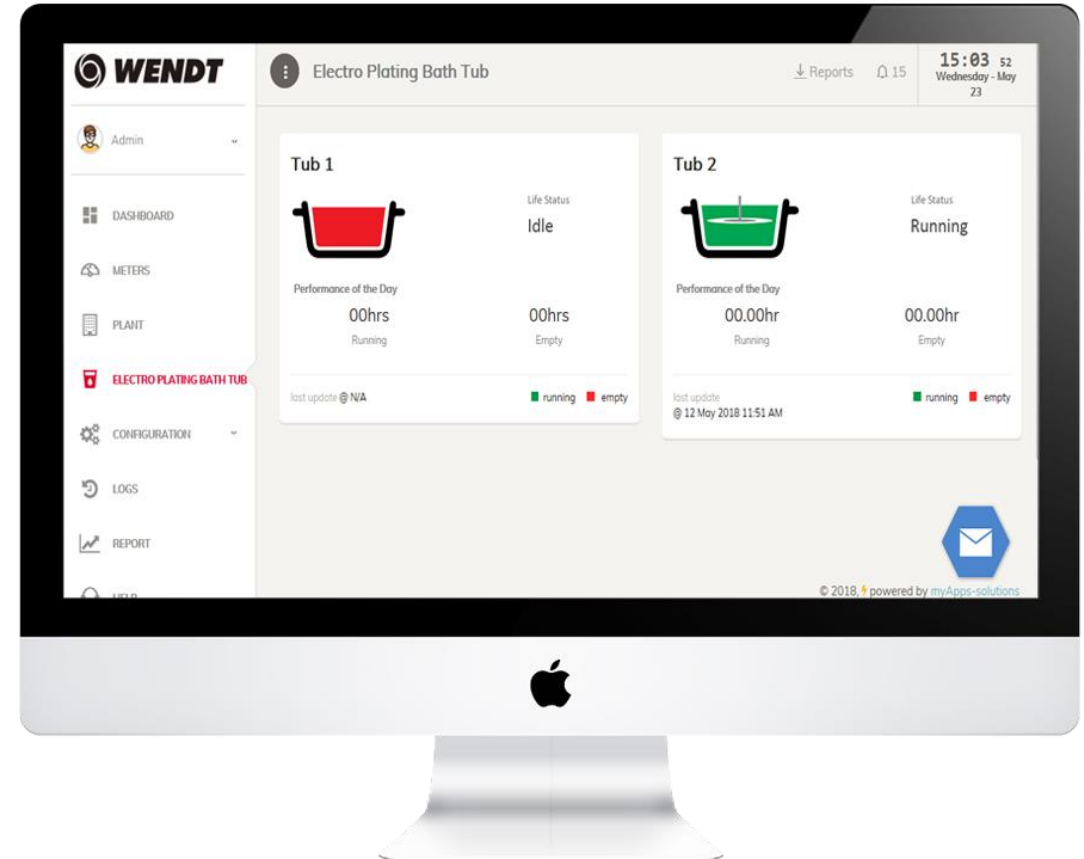
Tentative Master Feature list Cont...

List of features for Supervisor/Management

- All the operator features.
- All Maintenance Team features.
- Complete Issue reports – Daily and monthly
- Group Tubs reports.
- Full Admin Access.
- Report : 24/7 report for each tub, How much time tub in Running, Idle and Downtime in a day.
- Tubs effective usage reports – Daily and Monthly.



Product Screenshots for Admin



Commercial Proposal



Hardware	Commercial
For 1 set with 4 sensor units (for 4 both tubs). Distance between the sensor/ Wi-Fi card and sensor (bath tub) should be below 2 feet during assembly. If the distance is above 2 feet, additional set must be installed	Rs. 34,000.00/-
For each additional sensor unit per set	Rs. 2,500.00. (The units per set should be pre-determined at the time of manufacturing only)
Front end software	
<ul style="list-style-type: none">• Data collection software• Data presentation software• Application administration software• Reports	Rs. 1,50,000/- (one-time Cost for all the Bath Tubs with 1 Year Support)
Installation cost	Rs. 20,000.00 f or 16 sets in one location

Timelines and Warranty



Time Lines:

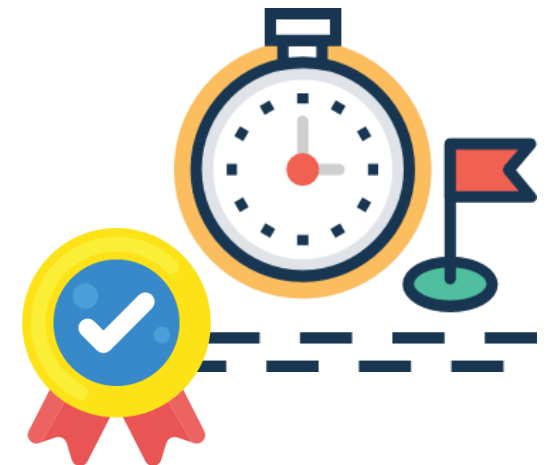
- 10 – 15 Weeks to complete the project after the confirmation.
- Installation period: 1 week for 16 sets.

Installation and warranty

- All the hardware units will have one-year warranty

Note:

- The server and the Wi-Fi network should be provided by the client. Server should be MS Windows server.
- If server and will be provided by us. There will be annual charges for server.
- Price excluding Taxes





THANK YOU

sales@myapps-solutions.com

www.myapps-solutions.com

